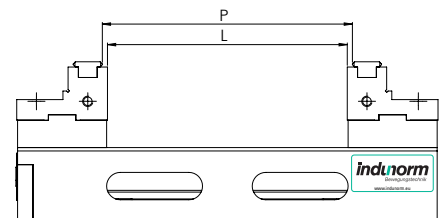
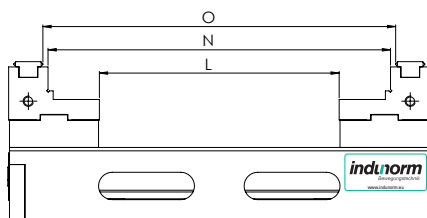
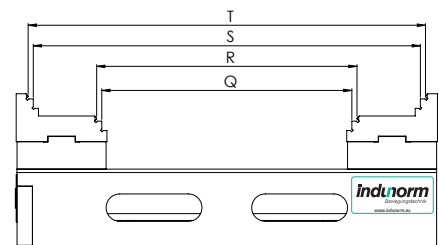
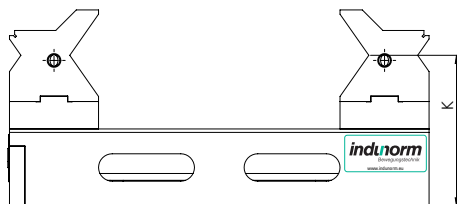
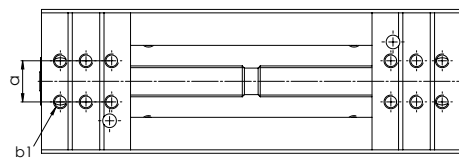
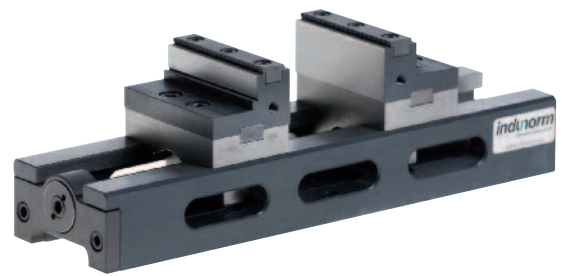
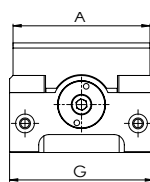
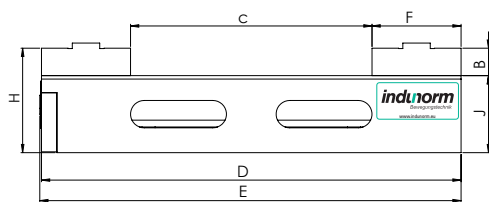
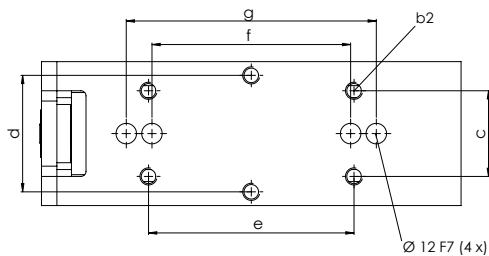


# Maschinenspannstöcke für die Werkstückautomation

## Zentrierspannstock IZS

### Technische Zeichnung



## Technische Daten IZS

Typ		IZS	IZS	IZS	IZS	IZS
Backenbreite	A	50	80	80	125	125
Bestell-Nr.						
Einspanntiefe	B	8	16	16	17	17
Spannweite	C	46	141	211	113	183
Bettlänge	D	200	245	315	245	315
Gesamtlänge	E	121.5	246	316	246	316
Spannschieber	F	37	52	52	66	66
Fußbreite	G	52	84	84	127	127
Gesamthöhe	H	40	61	61	79	79
Betthöhe	J	32	45	45	62	62
Spitzenmitte	K	–	88	88	–	–
Sechskant SW		10	12	12	17	17
	a	14	24	24	32	32
	b1	M4	M8	M8	M8	M8
	b2	M8	M10	M10	M10	M10
	c	30	50	50	50	50
	d	–	68	68	68	68
	e	40	120	120	120	120
	f ± 0.02	58	116	116	116	116
	g ± 0.02	–	146	146	146	146
	L	45	140	210	112	182
	N	83	200	270	200	270
	O	89	206	276	206	276
	P	51	146	216	118	188
	Q	–	146	216	–	–
	R	–	152	222	–	–
	S	–	226	296	–	–
	T	–	232	302	–	–
Zentriergenauigkeit		± 0.02	± 0.02	± 0.02	± 0.02	± 0.02
Gewicht	kg	1.6	5.5	6.7	12.7	15.5

## Spannkraftdiagramm

